

RifeMedic

Quantum Radionics Resonator



By:
Dr. Pieter van Wyk

What is a RifeMedic?

A Frequency Instrument that also is:

- a Health Enhancement Instrument,
 - a Tension Relaxation Instrument,
 - a Body Organ and System Stimulator,
 - a Body and Organ Detoxifier,
 - a Virus and Parasite Destroyer,
 - an Emotional Balancer,
- with more than 1 600 complete programs

Dr. Raymond Royal Rife

- Dr. Rife invented powerful optical microscopes in order to be able to see living bacteria, viruses and fungi that he suspected to be causing a range of illnesses

Source: www.rife.de



The Cure for Cancer

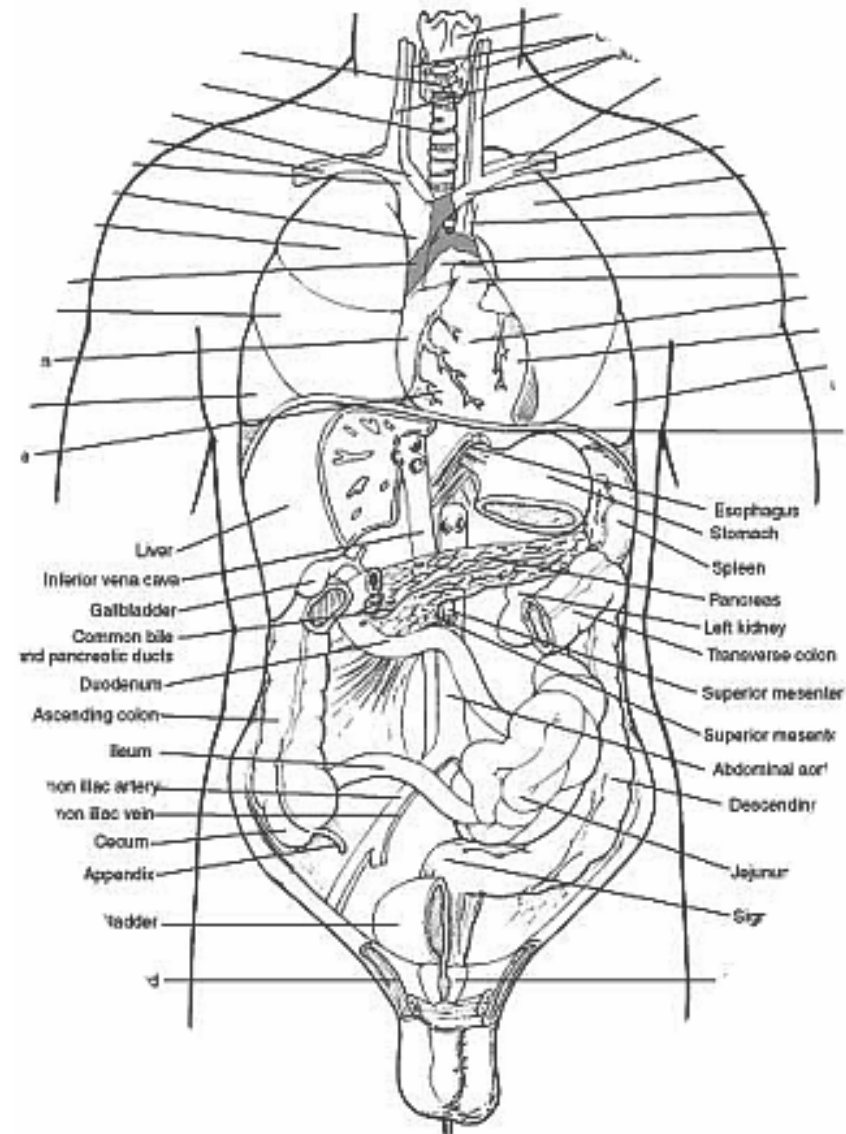
- Dr. Rife's inventions led to the development of a remarkable way of selectively destroying bacteria and viruses by subjecting them to their own resonance frequency in a similar way to how a glass is shattered when a singer hits the right note!
- What happened to this great discovery! According to Barry Lynes in his book "The Cancer Cure That Worked", it was suppressed by the FDA and AMA in the USA of the time (and still is). You will find some interesting accounts of what happened on the www.rife.de web site.

RifeMedic Science

- Based on the original frequency applications of Dr. Raymond Royal Rife.
- A high quality signal that will resonate a microbe to destruction, causing it to die.
- Applying a Frequency Signal, an Electromagnetic field or a Radionics signal.
- To accomplish an Aggressive, Moderate or a Soft application.

Bio-Resonance

- Each organ and system has a different frequency,
- Each organism has its own natural frequency



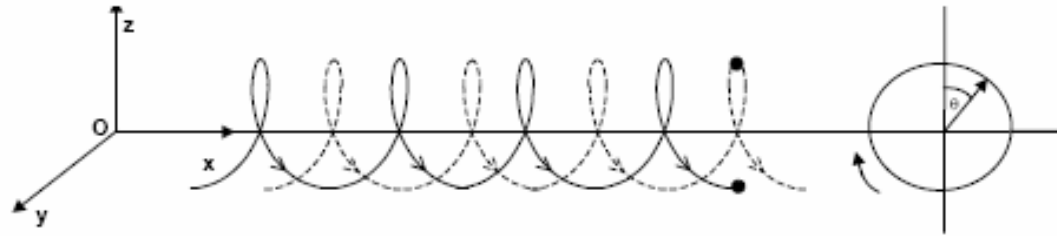
Effect of Resonance on a Bacteria

- A frequency is applied to a harmful bacteria specimen invitro,



- Within seconds the bacteria skin is torn apart,
- The bacteria is dead,
- The same happens to parasites and viruses.

RifeMedic Bio-Resonance



Signal Qualities of the RifeMedic:

- High quality signals,
- High Accuracy,
- High Intensity,
- Square wave,
- Uni-polar and bipolar.

Most other Rife-like instruments have been proven to be of poor to extremely poor quality (toy-like and amateur).

RifeMedic and Accessories



RifeMedic and Accessories

- 1 x RifeMedic resonator,
- 1 x Carry Case,
- 2 x Quality Stainless steel Hand Electrodes,
- 2 x Quality Stainless steel Feet Electrodes,
- 2 x Quality Stainless steel Body Electrodes,
- 2 x Connection Cables,
- 1 x Remote Control,
- 1 x Conductive Gel,
- 1 x Electro-magnetic blanket,
- 1 x Computer software CD,
- 1 x Computer serial connection cable,
- 1 x User manual CD,
- 1 x Program list,
- 1 x Medical wordlist CD



RifeMedic Advantages:

- Of the Best Quality in the world
- Very good results by many users
- Comprehensive program list
- No programming – all pre-programmed
- Very easy user-interface
- LCD 4 x 20 character LCD screen
- Select programs by Name or by Number
- Includes training
- 3 year warranty

Best World Quality



- No metal joints
- Hygienic
- Strong

Electro-magnetic application



- Hands-free
- Feel no signal sensation
- Can run for longer times

Safety:



- Tested by all South African authorities
- Complies and Qualifies as Type BF device
- ISO 13485 Medical Device Quality Control

RifeMedic Program List

- Selection by Program Number
- Selection by Program Name
- Program time duration is indicated

glomerulonephritis See also General antiseptic) {Tt=54}
13010 Streptococcus viridans {Tt=39}
13020 Streptococcus virus {Tt=18}
13030 Streptomyces griseus (soil bacteria which yields streptomycin) {Tt=12}
13040 Streptothrix (includes Actinomycosis, Nocardia, and Actinomyces israeli) {Tt=66}
13050 Stroke follow up {Tt=60}
13060 Strongyloides (see Parasites, strongyloides) {Tt=24}
13070 Struma (family of organisms that can infect the thyroid.) {Tt=39}
13080 Struma cystica {Tt=12}
13090 Struma nodosa {Tt=21}
13100 Struma parenchyme {Tt=6}
13110 Stye (staph infection of sebaceous gland of eyelash. Also use Staphylococci infection set) {Tt=28}
13120 Subluxation induced disorders {Tt=6}
13130 Sudor pedis (excessive foot sweat) {Tt=12}
13140 Sun allergy (Examine prescription drugs, such as Psoralen, for photo sensitization properties.) {Tt=36}
13150 Sunstroke {Tt=40}
13160 Surgery anaesthesia detox (see also Liver support) {Tt=20}
13170 Surgery preop postop prevent infections (see also General antiseptic, Staph, and Strep sets) {Tt=102}
13180 Surgical pain post op {Tt=9}
13190 Swelling (edema. See also Kidney insufficiency and Lymph stasis freqs) {Tt=39}
13200 Swimmers ear (also see Pseudomonas aeruginosa and Otitis externa) {Tt=21}
13210 Swollen glands (use Lymph and see Mumps freq sets) {Tt=25}

Windows Control Software

Fully controls the **RifeMedic** from a computer

Program Setup Information

View Programs

IMPORTANT NOTICE

Conditions, Warnings, Precautions, Measurements, Information, and all aspects regarding the use of a RifeMedic instrument must be read and thoroughly understood before it may be used

Com Port

Connect

Progress

Instrument No: [Digital Display]

Hour Min. Sec. Total Time [Digital Display] [Digital Display] [Digital Display]

Total Time Left [Digital Display] [Digital Display] [Digital Display]

Cycle Time [Digital Display] [Digital Display] [Digital Display]

Cycles Todo [Digital Display] [Digital Display]

Frequency [Digital Display]

Mode [Digital Display]

Instrument Output Feedback

SET O/P INTENSITY [Analog Gauge]

O/P LOAD INTENSITY [Analog Gauge]

O/P LOAD CURRENT [Analog Gauge]

1: MAIN 2: PROGRAMS 3: CONTROL 4: PATIENTS

Rife Programs Setup

Prog#	Prog
190	Ad. Acrobic dysentery
200	Ad. Atrophic lateral sclerosis
210	Ad. Anel itching
220	Ad. Anaphixis
230	Ad. Aneurysm
240	Ad. Angor
250	Ad. Angina
260	Ad. Angine pectoris
270	Ad. Angine throat
280	Ad. Ankylosing spondylitis
290	Ad. Anoxia
300	Ad. Anthrax
310	Ad. Antiseptic general
320	Ad. Anxiety 1
330	Ad. Apoplexy
340	Ad. Appendicitis
350	Ad. Appetite lack of
360	Ad. Arenas tonaus
370	Ad. Arnie
380	Ad. Arsenic alb
390	Ad. Arteriosclerosis
400	Ad. Arthritis 1
410	Ad. Arthritis arthralgia due to gout
420	Ad. Arthritis arthrosis and parathyroid dis
430	Ad. Arthritis general
440	Ad. Adrenal stimulant 1

Frequency	Duty Cycle	Mode	Time Min	Time Sec	Burst Dv (v)	Burst C
10	50	Pulse Swir 3	0	0	0	0
20	50	Pulse Swir 3	0	0	0	0
30	50	Pulse Swir 3	0	0	0	0
40	50	Pulse Swir 3	0	0	0	0
50	50	Pulse Swir 0	15	0	0	0
60	50	Pulse Swir 0	15	0	0	0
70	50	Pulse Swir 3	0	0	0	0
80	50	Pulse Swir 3	0	0	0	0
90	50	Pulse Swir 3	0	0	0	0

1: MAIN 2: PROGRAMS 3: CONTROL 4: PATIENTS

A great tool for Researchers

RifeMedic Complete Programs

- Dr. Rife original frequency programs
- International scientific, tested programs
- International approved, tested programs
- Dr. Hulda Clark frequencies
- Newly researched, developed programs
- Animal conditions programs

The [RifeMedic](#) is a professional Rife instrument and can not be compared with other (toy-like) instruments.

International Standards

- Uses Germany CE qualified components,
- Uses USA top industrial and military quality components,
- Uses CE design and manufacturing standards,
- European ISO quality control standards,
- 100 % South African Designed, Developed, Manufactured and Maintained,
- Policy of QUALITY FIRST

SA Department of Health

- RifeMedic is not licensed as a medical device
- FDA does not approve Rife
- Rife is a suppressed modality for almost a hundred years

But,

the **RifeMedic** has Certificates of Compliance from all the required South African authorities.

Good Reasons to buy a RifeMedic:

- A Life long investment,
- Portable, take it anywhere with you,
- Apply it any place, at any time,
- It is like a comprehensive First Aid Kit,
- Applications for Acute conditions,
- Applications for Chronic conditions,
- Applications for Emotions,
- Applications for general health maintenance
- The best quality you can get

Advanced Resonance Course

Rife and Resonance therapy courses are presented from time to time by Dr. Pieter van Wyk. The course provides advanced information on various aspects relevant to Rife but also includes other resonance therapy modalities that may easily be implemented and utilised at home or in a health clinic set up. The advanced resonance course is for any person who is interested in knowing more. A comprehensive overview is provided on all the different Rife and RifeMedic modalities.

At the end of the course the attendants will have gained knowledge on, or be exposed to:

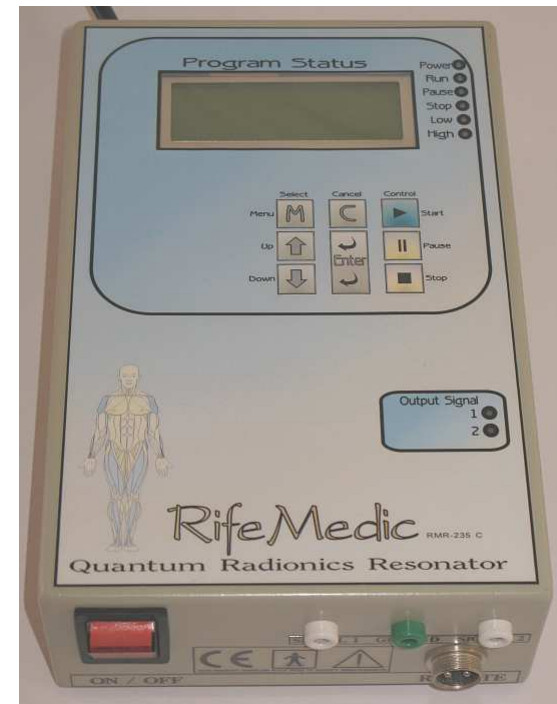
- The background, history, discoveries and other events regarding Dr. Raymond Royal Rife.
- Insight on microbes and how they affect the human body.
- Aspects of Resonance and Frequency.
- Structure of Rife programs.
- Effects of individual frequencies.
- The different effects of resonance therapy on the human body.
- RifeMedic modalities.
- Other resonance therapy modalities.
- An overview of conditions and pathology and resonance therapy applications to it.
- General discussions on conditions, applications, and other useful aspects.
- Further books and resources on Rife and resonance therapy.
- Courses are presented in English, Afrikaans or Bilingual.
- The course is presented over two days, normally from 9 am to about 4 pm.
- Course material is provided in documents and on CD's.
- A Certificate of Attendance will be issued at the end of the course.

For more details and course dates, please contact us on 011 794 2750 during business hours.

RifeMedic

Specifications:

Number of programs:	1 615
Warranty:	3 years
Classification:	Type BF
Signal accuracy:	0.002 Hz
Signal switching:	1ns / V
Signal intensity:	0 – 40 V p-p
Possible frequencies:	500 million
Frequency Range:	0 – 1 200 000 Hz
Frequency band:	0 – 5 000 000 Hz
Frequency reference:	10 000 000 Hz
Display:	LCD 4 x 20 char
Keypad:	8 keys
Power Supply:	220V AC



RifeMedic

Thank You

Contact Details:
Dr. Pieter van Wyk
Tel: 011 794 2750

